

DEPT. 106 – JR. HORSES/PONIES
Superintendents –Jay Wolfe
262-224-1818 wolfman18w@yahoo.com

JUDGING: Gymkhana divisions will be run on Tuesday at 5:15 p.m. (Division A)
Western/Trail will be judged on Thursday at 8:30 am (Divisions B-J)
English/Driving will be judged on Saturday at 8:30 am (Divisions K-S)

GENERAL RULES:

1. Exhibitor must be a member of the 4-H Horse & Pony project (which includes 4-H Horse and Horseless Horse members) or FFA and must meet the requirements of that organization in order to participate in the horse shows at the fair.
2. A negative Coggins test taken within twelve months of the last day of the fair is required. The original Coggins (along with a second copy which includes the name of the youth to be kept on file) must be handed in at the registration table in the Pleasure Horse barn when you arrive at the Fair.
3. All horses and ponies are required to stay for the entire six days of the fair. ONLY those horses showing in the gymkhana classes do not have to stay. At the discretion of the Superintendent and the Horse & Pony Project Board of Directors, other horses and ponies may be allowed to trailer in for the shows, only if the barn is full.
4. Horses/ponies can begin to arrive on Tuesday after 12:00 noon. ALL ANIMALS MUST BE REGISTERED BY 9:00 A.M. ON WEDNESDAY. Upon arrival, the exhibitor or a representative must register the horse/pony at the registration table in the Pleasure barn. Once registered, the horse/pony can be unloaded and put in its stall. All horses/ponies must be in the stall assigned to the exhibitor; any stall changes must be approved by the Superintendent or the person who assigned stalls. ALL EXHIBITORS MUST ATTEND THE BARN MEETING AT 9:30 A.M. ON WEDNESDAY IN THE PLEASURE BARN. Exhibitors will receive a copy of all barn rules at registration. These rules will also be discussed at the barn meeting. Horse/ponies must remain in or around the barn until 7:00 p.m. on Sunday evening, and must be out of barn by 8:00 p.m.
5. Horses/ponies will not be permitted to enter the fair unless they are in a good state of health and do not show evidence of any contagious or infectious disease. If it is deemed necessary to consult a veterinarian, the exhibitor agrees to assume financial responsibility. Horses/ ponies may be excused from the fairgrounds due to illness or injury only by a vet or a Superintendent.
6. It is the exhibitor's responsibility to make sure their animal is cared for during the fair. Only the exhibitor or designated person approved by Superintendent may care for the animal.
7. Only stallions born after January 1 of the exhibit year are eligible to be shown.
8. Exhibitors must take care of the stall that has been assigned to them, including keeping it clean during the Fair. At the end of the Fair, the exhibitor must completely clean out the stall and remove all decorations, tape, staples, etc. used to hang things in or on the stall. The stall must then be checked by a show committee designee before the exhibitor leaves the Fair.
9. Fair premiums can be withheld from any exhibitor who violates these rules, or the Barn Rules distributed at registration, after being warned by the Superintendent. Violation can also result in loss of eligibility to show at the State 4-H Expo or Gymkhana as decided by the Horse & Pony Project Board of Directors.
10. Any cruelty or abuse to any horse or pony by anyone will not be tolerated!

Exhibitor:

11. Only 4-H Horse & Pony project members can show in the Horseless Horse classes at Fair or qualify for the State 4-H Expo. 4-H members must be in grades 6-13 to show a horse at State Expo but any 4-H youth can exhibit in educational classes.
12. A pony exhibitor must enter pony divisions. No crossovers allowed. A pony shall be 56" and under. The pony may be officially measured before the show.
13. Family members may share an animal as long as each show in the appropriate age group. However, horses/ponies can only be shown by one family member in Halter (divisions A & K) and Open Walk/Trot.
14. An exhibitor in Grades 3-5 must enter either W-T classes or W-T-C classes but not both. Exhibitors can register for both classes if they are unsure of which they will want to show in and then scratch as appropriate on Wednesday when they register.
15. A maximum of one horse may be shown by an exhibitor per class.

Riding:

16. All riders MUST WEAR a SEI approved helmet, with the safety harness securely fastened, when riding or driving the horse/pony.
17. All exhibitors must be properly clothed (i.e., boots, long pants and long sleeves, including gymkhana divisions, when showing; short sleeves (no tank tops) for practice).
18. All horse/ponies must be bridled and saddled when being ridden.
19. No riding double on any horse or pony.
20. Riding is allowed only in the warm-up areas and show ring. In all other areas, the exhibitor MUST dismount and lead their horse/pony. On show days, riding is allowed at the walk in designated areas.

Judging:

21. Judging shall be according to current Wisconsin State 4-H Horse Show Guidelines and AHSA rules wherever possible. Issues not covered by these rules will be directed to the Judge and to the Show Committee.
22. All State 4-H Expo qualifying divisions will be judged by individual grade groups. Classes can be combined if there are less than five entries for a class. Any combined classes will still be judged separately by grade.
23. The show will be run in an order to minimize tack changes between classes. Requests for tack changes are required on Wednesday. Five minutes shall be allowed for all changes. If exhibitors have potential conflicts with other projects being shown at the Fair, they must notify the Show Committee on Wednesday.
24. No one shall be allowed to enter the ring after the class has started without the consent of the judge.
25. Danish Judging will be used except for Halter (Divisions A & K), and Gymkhana (Division S). Any questions regarding judging placement contact Superintendent and/or Show Committee Chair. Do Not Approach the Judge.
26. The Superintendent and Adult 4H Horse Leader reserve the right to limit Grand and Reserve Champion classes. Classes will be held for each division if there are at least **5 horses/exhibitors** to selected participate, excluding halter classes. Depending on number of participants, we reserve the right to merge pony and horse Grand and Reserve, but only WTC or WT would be combined.

Premiums:

- 27. Premiums are as follows: \$8.00 (1st place), \$7.00 (2nd place), \$6.00 (3rd place), and \$5.00 (4th place).
- 28. A maximum of two premiums will be paid out (max total= \$16.00). The premiums will be determined based on the highest placing in an exhibitor division (showmanship, equitation, hunter hack, horsemanship or reinsmanship) and the highest placing in a pleasure division (halter, pleasure, western riding, trail, gymkhana, driving or obstacle driving).

The Washington County 4-H Horse Project, UW-Extension, and Fair Park, and its officials and directors, shall not be responsible for accidents or injuries.

Exhibitors who do not have their animals under control or who show poor sportsmanship may be dismissed from the ring.

Tuesday – 5:15 PM

Gymkhana

Division A – Gymkhana Division

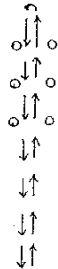
All divisions will be placed based on the exhibitor’s time to complete the required pattern for that event. Ribbons will be awarded to all participants. Exhibitor’s do not need to qualify for the State 4H Gymkhana Show by placing, they can attend as they wish.

KEY RACE

The pattern will consist of 6 poles set 6 feet apart and 12 feet long, as shown. The rider will ride through the poles, turn around, and ride back through the poles, and across the timing line.

Class No.

- 1. Key Race, Grades 3-5
- 2. Key Race, Grades 6-8
- 3. Key Race, Grades 9-10
- 4. Key Race, Grades 11-13

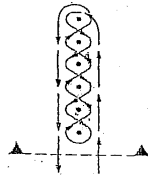


POLE BENDING

This event will have the rider run a pattern using 6 poles, as shown.

Class No.

- 5. Pole Bending, Grades 3-5
- 6. Pole Bending, Grades 6-8
- 7. Pole Bending, Grades 9-10
- 8. Pole Bending, Grades 11-13



PLUG

This event will have the rider go around one barrel.

Class No.

- 9. Plug, Grades 3-5
- 10. Plug, Grades 6-8
- 11. Plug, Grades 9-10
- 12. Plug, Grades 11-13

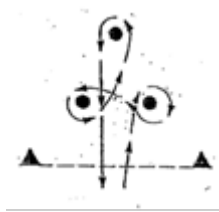


BARREL RACE

This event will have a rider run a cloverleaf type pattern around three barrels. Pattern can be run to either the left or the right.

Class No.

- 13. Barrel Race, Grades 3-5
- 14. Barrel Race, Grades 6-8
- 15. Barrel Race, Grades 9-10
- 16. Barrel Race, Grades 11-13

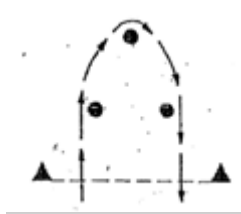


FLAG RACE

This event will have the rider run outside three barrels with a flag in hand, and deposit it into a bucket at the last barrel.

Class No.

- 17. Flag & Pail, Grades 3-5
- 18. Flag & Pail, Grades 6-8
- 19. Flag & Pail, Grades 9-10
- 20. Flag & Pail, Grades 11-13

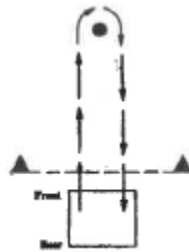


SPEED AND ACTION

This event will have the rider run around a barrel and then back to a box outlined by flour or lime. Once in the box you must keep horse inside the box for 5 seconds to complete the run.

Class No.

- 21. Speed and Action, Grade 3-5.
- 22. Speed and Action, Grades 6-8
- 23. Speed and Action, Grades 9-10
- 24. Speed and Action, Grades 11-13



Division B – Western Halter Classes

The horse, pony, or draft is judged on its confirmation based on the breed standards and suitability as a western mount. Open to all members. Not a State 4-H Expo Qualifying Class. Placings 1st - 10th.

Class No. Premiums: \$8.00, \$7.00, \$6.00, \$5.00

- 25. Western Horse Mares
- 26. Western Horse Geldings
- 27. Draft Horse Halter

Grand/Reserve Champion Western Halter – 1st & 2nd place winner in classes 25-27.

Division C – Western Showmanship

The exhibitor is judged on his/her ability to show the horse, pony, or draft in Western attire from the ground.

Class No. Premiums: \$8.00, \$7.00, \$6.00, \$5.00

- 28. Draft Horse Showmanship, Grades 3-13
- 29. Pony Western Showmanship, Grades 6-13
- 30. Pony Western Showmanship, Grades 3-5
- 31. Western Showmanship, Grades 12-13
- 32. Western Showmanship, Grades 10-11
- 33. Western Showmanship, Grades 8-9
- 34. Western Showmanship, Grades 6-7
- 35. Western Showmanship, Grades 3-5

Division D – Horseless Horse Western Showmanship

The exhibitor is judged on his/her ability to show the horse, pony, or draft in Western attire from the ground. This division is only open to 4-H Horseless Horse project members.

Class No. Premiums: \$8.00, \$7.00, \$6.00, \$5.00

- 36. Horseless Horse Showmanship, Grades 9-13
- 37. Horseless Horse Showmanship, Grades 6-8
- 38. Horseless Horse Showmanship, Grades 3-5

Grand/Reserve Champion Western Showmanship – All blue-ribbon winners in classes 28-38.

*See #26 under Judging

Division E—Horseless Horse Western Pleasure

The horse, pony, or draft is judged on its suitability as a pleasure mount. Gaits are judged at the Walk/Trot only. Western attire is required. This division is only open to 4-H Horseless Horse project members.

Class No. Premiums: \$8.00, \$7.00, \$6.00, \$5.00

- 39. Horseless Horse Pleasure, Walk/Trot, Grades 9-13
- 40. Horseless Horse Pleasure, Walk/Trot, Grades 6-8
- 41. Horseless Horse Pleasure, Walk/Trot, Grades 3-5

Division F – Western Pleasure

The horse, pony, or draft is judged on its suitability as a pleasure mount. Gaits are judged at the Walk/Trot/Canter unless indicated. Western attire is required. Classes marked “Gaited” are specifically for gaited horse breeds such as Saddlebreds, Tennessee Walkers, etc.

Class No. Premiums: \$8.00, \$7.00, \$6.00, \$5.00

- 42. Pony Western Pleasure, Grades 6-13
- 43. Pony Western Pleasure, Grades 3-5
- 44. Pony Western Pleasure, Grades 3-5, Walk/Trot Only (Cannot enter Canter Class)

Grand/Reserve Champion Pony Western Pleasure – All blue-ribbon winners in classes 42-43.

*See #26 under Judging

45. Western Pleasure, Grades 12-13
46. Western Pleasure, Grades 10-11
47. Western Pleasure, Grades 8-9
48. Western Pleasure, Grades 6-7
49. Western Pleasure, Grades 3-5
50. Western Pleasure, Grades 6-13 Walk/Trot Only (Cannot enter Canter Class; not State Qualifying)
51. Western Pleasure, Grades 3-5, Walk/Trot Only (Cannot enter Canter Class)
52. Western Gaited Horse, Walk/Pleasure Gait, Grades 3-13 (Cannot enter Canter Class)
53. Western Gaited Horse, Walk/Pleasure Gait/Canter, Grades 3-13

Grand/Reserve Champion Western Pleasure – All blue-ribbon winners in classes 45-49, 53.

*See #26 under Judging

Grand/Reserve Champion Walk/Trot Western Pleasure – All blue-ribbon winners in classes 39-41, 44, 50-52.

*See #26 under Judging

Division G—Western Horsemanship

The exhibitor is judged on his/her ability to ride the horse, pony, or draft. Gaits are judged at Walk/Trot/Canter unless indicated. Western attire is required.

Class No. Premiums: \$8.00, \$7.00, \$6.00, \$5.00

54. Pony Western Horsemanship, Grades 6-13
55. Pony Western Horsemanship, Grades 3-5
56. Pony Western Horsemanship, Grades 3-5, Walk/Trot Only (Cannot enter Canter Class)
57. Western Horsemanship, Grades 12-13
58. Western Horsemanship, Grades 10-11
59. Western Horsemanship, Grades 8-9
60. Western Horsemanship, Grades 6-7
61. Western Horsemanship, Grades 3-5
62. Western Horsemanship, Grades 6-13, Walk/Trot Only (Cannot enter Canter Class; not State Qualifying)
63. Western Horsemanship, Grades 3-5 Walk/Trot Only (Cannot enter Canter Class)

Grand/Reserve Champion Western Horsemanship – All blue-ribbon winners in classes 54-55, 57-61.

*See #26 under Judging

Division H—Horseless Horse Western/Horsemanship

The exhibitor is judged on his/her ability to ride the horse, pony, or draft. Western attire is required. This division is only open to 4-H Horseless Horse project members.

Class No. Premiums: \$8.00, \$7.00, \$6.00, \$5.00

64. Horseless Horse Horsemanship, Walk/Trot, Grades 9-13
65. Horseless Horse Horsemanship, Walk/Trot, Grades 6-8
66. Horseless Horse Horsemanship, Walk/Trot, Grades 3-5

Grand/Reserve Champion Horseless Horse Western Horsemanship - All blue-ribbon winners classes 56, 62-66.

*See #26 under Judging

Division I—Western Riding

The horse and exhibitor are judged on their ability to execute a Western riding pattern.

Class No. Premiums: \$8.00, \$7.00, \$6.00, \$5.00

- 67. Western Riding, Grades 12-13
- 68. Western Riding, Grades 10-11
- 69. Western Riding, Grades 8-9
- 70. Western Riding, Grades 6-7

Division J—Trail

To be shown on Thursday Following the Western Classes

The horse, pony, or draft is judged on its suitability as a trail mount. Horses may be ridden in English or Western attire. Classes 71-74 are State 4-H Expo qualifying classes. No crossovers with classes 75 and 76.

Class No. Premiums: \$8.00, \$7.00, \$6.00, \$5.00

- 71. Trail, Grades 12-13
- 72. Trail, Grades 10-11
- 73. Trail, Grades 8-9
- 74. Trail, Grades 6-7

Classes 75 & 76 are NOT State Qualifying classes. Beginner riders are encouraged to sign up for these classes if interested in trail riding as the patterns will be easier.

- 75. Trail, Grades 6-13 (Not State Qualifying)
- 76. Trail, Grades 3-5 (Beginner Trail Class, Not State Qualifying)

SATURDAY – 8:30 AM

ENGLISH / DRIVING

Division K—English Halter Class

The horse, pony or draft is judged on its confirmation based on their breed standards and suitability as a huntseat mount. Open to all members. Not a State Qualifying Class. Placings 1st-10th.

Class No. Premiums: \$8.00, \$7.00, \$6.00, \$5.00

- 77. English Halter Mares
- 78. English Halter Geldings

Grand/Reserve Champion English Halter – all 1st and 2nd place winners from classes 77-78.

Division L— English Showmanship

The exhibitor is judged on his/her ability to show the horse or pony in English or Huntseat attire from the ground. (Must use bridle; no halters)

Class No. Premiums: \$8.00, \$7.00, \$6.00, \$5.00

- 79. Pony Hunt Showmanship, Grades 6-13
- 80. Pony Hunt Showmanship, Grades 3-5
- 81. Hunt Showmanship, Grades 12-13
- 82. Hunt Showmanship, Grades 10-11
- 83. Hunt Showmanship, Grades 8-9
- 84. Hunt Showmanship, Grades 6-7
- 85. Hunt Showmanship, Grades 3-5

Division M—Horseless Horse English Showmanship

The exhibitor is judged on his/her ability to show the horse or pony in English or Huntseat attire from the ground. This division is only open to 4-H Horseless Horse project members. (Must use bridle; no halters)

Class No. Premiums: \$8.00, \$7.00, \$6.00, \$5.00

- 86. Horseless Horse Showmanship, Grades 9-13
- 87. Horseless Horse Showmanship, Grades 6-8
- 88. Horseless Horse Showmanship, Grades 3-5

Grand/Reserve Champion English Showmanship – All blue-ribbon winners in classes 79-88.

*See #26 under Judging

Division N—Driving Classes

The exhibitor is judged on his/her ability to drive the horse, pony, or draft and the horse, pony, or draft is judged on how well it moves under harness. (Classes may be split between horse & pony for showing purposes, if needed)

Class No. Premiums: \$8.00, \$7.00, \$6.00, \$5.00

- 89. Pleasure Horse/Pony Driving, Grades 6-13
- 90. Pleasure Horse/Pony Driving, Grades 3-5*
- 91. Pleasure Draft Horse Driving, Grades 3-13
- 92. Reinmanship Horse/Pony, Grades 6-13
- 93. Reinmanship Horse/Pony, Grades 3-5*
- 94. Draft Horse Reinsmanship, Grades 3-13
- 95. Obstacle Driving Horse/Pony, Grades 6-13
- 96. Obstacle Driving Horse/Pony, Grades 3-5*
- 97. Draft Horse Obstacle Driving, Grades 3-13

* It is required that drivers in Grades 3-5 be accompanied by an adult over 18 years of age.

Grand/Reserve Champion all driving classes – All blue-ribbon winners' classes 89-97.

*See #26 under Judging

Division O—English Pleasure

The horse, pony, or draft is judged on its suitability as a pleasure mount. Gaits are judged at the Walk/Trot/Canter unless indicated. English/Huntseat attire is required. Classes marked "Gaited" are specifically for gaited horse breeds such as Saddlebreds, Tennessee Walkers, etc.

Class No. Premiums: \$8.00, \$7.00, \$6.00, \$5.00

- 98. Pony English Pleasure, Grades 6-13
- 99. Pony English Pleasure, Grades 3-5
- 100. Pony English Pleasure, Grades 3-5 Walk/Trot Only (Cannot enter Canter Class)

Grand/Reserve Champion Pony English Pleasure- all blue-ribbon winners in classes 98-99.

*See #26 under Judging

- 101. English Pleasure, Grades 12-13
- 102. English Pleasure, Grades 10-11
- 103. English Pleasure, Grades 8-9
- 104. English Pleasure, Grades 6-7
- 105. English Pleasure, Grades 3-5
- 106. English Pleasure, Grades 6-13 Walk/Trot Only (Cannot enter Canter Class, not State Qualifying)

- 107. English Pleasure, Grades 3-5 Walk/Trot Only (Cannot enter canter Class)
- 108. English Gaited Horse Walk/Pleasure Gait, Grades 3-13 (Cannot enter Canter Class)
- 109. English Gaited Horse Walk/Pleasure Gait/Canter, Grades 3-13.

Grand/Reserve Champion English Pleasure- all blue-ribbon winners in classes 101-105, 109.

*See #26 under Judging

Division P—Horseless Horse English Pleasure

The horse, pony, or draft is judged on its suitability as a pleasure mount. Gaits are judged at the Walk/Trot only. English attire is to be worn. This division is only open to 4-H Horseless Horse project members.

Class No. Premiums: \$8.00, \$7.00, \$6.00, \$5.00

- 110. Horseless Horse Pleasure, Walk/Trot, Grades 9-13
- 111. Horseless Horse Pleasure, Walk/Trot, Grades 6-8
- 112. Horseless Horse Pleasure, Walk/Trot, Grades 3-5

Grand/Reserve Champion All Walk/Trot Pleasure – All blue-ribbon winners in classes 100, 106-108, 110-112.

*See #26 under Judging

Division Q—English/Huntseat Equitation

The exhibitor is judged on his/her ability to ride the horse, pony, or draft. Gaits are judged at the Walk/Trot/Canter unless indicated. English attire is to be worn.

Class No. Premiums: \$8.00, \$7.00, \$6.00, \$5.00

- 113. Pony Huntseat Equitation, Grade 6-13
- 114. Pony Huntseat Equitation, Grades 3-5
- 115. Pony Huntseat Equitation, Grade 3-5, Walk/Trot Only (Cannot enter Canter Class)
- 116. Huntseat Equitation, Grades 12-13
- 117. Huntseat Equitation, Grades 10-11
- 118. Huntseat Equitation, Grades 8-9
- 119. Huntseat Equitation, Grades 6-7
- 120. Huntseat Equitation, Grades 3-5
- 121. Huntseat Equitation, Grades 6-13, Walk/Trot Only (Cannot enter Canter Class; not State Qualifying)
- 122. Huntseat Equitation, Grades 3-5, Walk/Trot Only (Cannot enter Canter Class)

Grand/Reserve Champion Huntseat Equitation – All Blue-Ribbon winner in classes 113-114, 116-120.

*See #26 under Judging

Division R—Horseless Horse Equitation

The exhibitor is judged on his/her ability to ride the horse, pony, or draft. English attire is required. This division is only open to 4-H Horseless Horse project members.

Class No. Premiums: \$8.00, \$7.00, \$6.00, \$5.00

- 123. Horseless Horse Equitation, Walk/Trot, Grades 9-13
- 124. Horseless Horse Equitation, Walk/Trot, Grades 6-8
- 125. Horseless Horse Equitation, Walk/Trot, Grades 3-5

Grand/Reserve Champion Horseless Horse Equitation- All blue-ribbon winner in classes 115, 121-122, 123-125.

*See #26 under Judging

Division S—Hunter Hack

Horse and rider combination are judged on their ability to ride different gaits and jump fences. English/Huntseat attire is required.

Class No. Premiums: \$8.00, \$7.00, \$6.00, \$5.00

126. Hunter Hack, Grades 9-13

127. Hunter Hack, Grades 6-8

128. Hunter Hack, Grades 3-5